



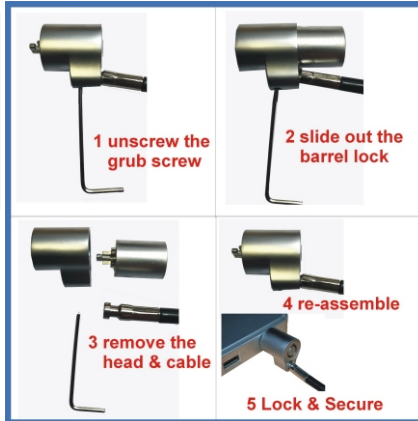
NEXUS COMPUTERS

HQ 01706 882778 Peter Mob 07885 280369 David Mob 07875 662199 Est 1988

E peter@pos-security.net E david@pos-security.net W www.pos-security.net

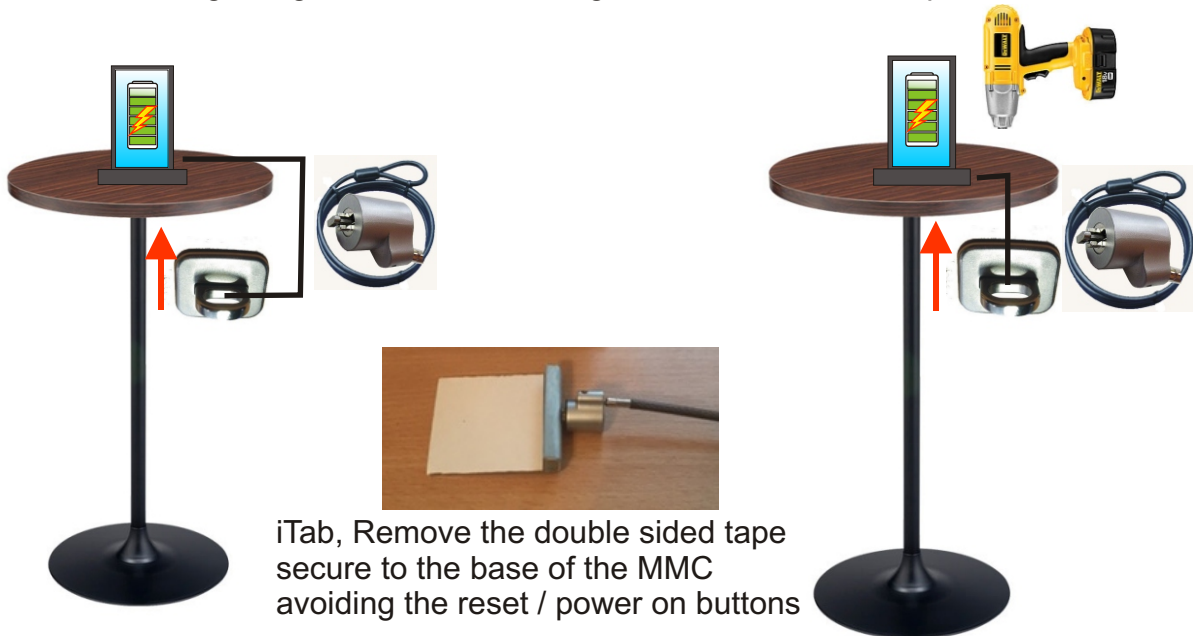
3 Smithy Green, OFF Huddersfield Road, Ogden, Newhey, Rochdale OL163TG

VAT No 508 1329 65



MMC iTab Dreadnought Cable Anchor

Fitting using a iTab, a Dreadnought cable and a Anchor point

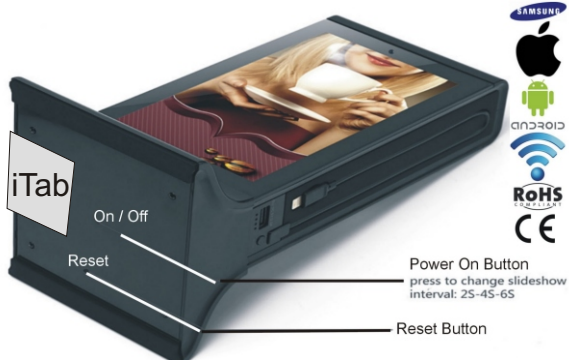


- 1 Attach the Anchor to the underside of the table.
- 2 Tread the Dreadnought cable through the anchor & through the loop.
- 3 Bring around and secure to the MMC.

- 1 Attach the Anchor to the underside of the table.
- 2 Tread the Dreadnought cable through the anchor & through the loop.
- 3 Drill a 6mm Hole in the table top
- 4 Remove the Dreadnought head pass the cable through the hole.
- 5 Reattach the Dreadnought head.
- 6 Secure to the MMC

You can also loop the Dreadnought around the leg then go to stage 3 This way reduces the chance of MMC being knocked off the table.

NB **Drill close to the table centre.**



iTab, Remove the double sided tape secure to the base of the MMC avoiding the reset / power on buttons

